

24

2024 CATALOG



JE MACHINE TECH
QUALITY. INTEGRITY. INNOVATION.

CALIFORNIA U.S. MANUFACTURER



TABLE OF CONTENTS

TABLE OF CONTENTS

NEW PRODUCTS	01	BUFFER TUBES & BUTTSTOCKS	27	SHOOTING ACCESSORIES	53
FEATURED PRODUCTS	02	Buffer Tubes		Lasers	
AR UPPER RECEIVER PARTS	03	Rifle Buffer Tube & Components		Boresighters	
Handguards		Buttstocks		Shell Catchers	
Handguard Accessories		Buffer Components		Slings	
Forward Grips		PISTOL COMPONENTS	41	AR Tools	
Muzzle Brakes		Pistol Slides		Cleaning Mats	
Carry Handle		Slide/Lower Parts Kits For Glock		Accessories For Shotgun	
Gas Components		FCU Parts Kit For Sig Sauer		Accessories For AK	
Sights		BARRELS	47	Accessories/Tools For Glock	
Upper Receiver Parts		Barrels For AR		Other Accessories	
AR LOWER RECEIVER PARTS	17	Barrels For Glock			
Lower Receiver Parts					
Lower Parts Kit					
Pistol Grips					

NEW PRODUCTS

PS-DC4B (P.15)
QD Lightweight AR-15
Dust Cover .223 5.56

PS-223MLK12KBLK-H (P.6)
AR-15 Ultra-Lightweight
Minimalist Rail Handguard

TS-GT56 (P.61)
AR-15 A2 Front Sight Armorer's Block

FEATURED PRODUCTS

PS-223MLK15IOD (P.4)
AR-15 M-LOK Versatile Free
Float Handguard

PS-ST7G-B (P.33)
AR-15 SOPMOD Stock

PS-PG25OD (P.25)
1911 AR Pistol Grip

TS-GT55 (P.59)
Armorer's Multi Tool
Combo Wrench



HANDGUARD I STYLE



PS-223MLK7/10/12/15I AR-15 M-LOK Versatile Free Float Handguard

Designed to be slim, lightweight, ergonomic, and resilient; the full line of JE Machine Tech VFF M-LOK handguards embodies the definition of functionality. Constructed from 6061-T6 aluminum, machined with twin anti-rotation tabs, and finished with a sleek type III hard-coat anodized finish, the VFF line is built to look good while being resilient enough to tackle even the most demanding industry needs. In addition, the full VFF line is manufactured with a clamp-on system, nullifying the need to time your barrel nut during assembly.

When summed up, the JE Machine Tech VFF line of M-LOK handguards are the perfect pairing of feature set and reliability, making them the absolute best choice for any AR.

- » Clamp-on system, no timing required for easy installation
- » Type III hard-coat anodized 6061-T6 aluminum
- » Free float and lightweight design
- » 6 built-in QD sockets
- » Full picatinny rail on top
- » Available in 7"/10"/12"/15"
- » M-LOK compatible
- » 1.315" ID
- » Anti-rotation tabs
- » Steel barrel nut and all mounting hardware included

Size	Weight	●	●	●	●	●
7"	8.25 oz	PS-223MLK7IBLK	PS-223MLK7ITAN	PS-223MLK7IOD	PS-223MLK7IRED	PS-223MLK7IBLUE
10"	10.10 oz	PS-223MLK10IBLK	PS-223MLK10ITAN	PS-223MLK10IOD	PS-223MLK10IRED	PS-223MLK10IBLUE
12"	11.25 oz	PS-223MLK12IBLK	PS-223MLK12ITAN	PS-223MLK12IOD	PS-223MLK12IRED	PS-223MLK12IBLUE
15"	12.50 oz	PS-223MLK15IBLK	PS-223MLK15ITAN	PS-223MLK15IOD	PS-223MLK15IRED	PS-223MLK15IBLUE



HANDGUARD G STYLE



PS-223MLK7/10/12/15G
AR-15 M-LOK Free Float Slant Cut Handguard

Conceived to be an intermediary option between M-LOK and picatinny, the G style handguards are the perfect marriage of old and new. Starting from the front we kept four picatinny mounting points to allow the user the option to direct-attach accessories. Moving back, we removed the bulky picatinny and replaced it with M-LOK mounting points.

This swap allows us to maximize the available mounting surface while reducing weight. In addition, the mid-M-LOK mounting surface slims the overall profile on the handguard while increasing ergonomics and comfort. At the rear of the handguard, you will find a pair of quick detach mounts and our clamp-on system. This system nullifies the need to time the barrel nut during installation, making the G style handguards the perfect option for users transitioning to M-LOK.

- » Clamp-on system, no timing required for easy installation
- » Type II black anodized 6061-T6 aluminum
- » Full picatinny rail on top and fixed picatinny rails at 3, 6, 9 o'clock positions near the front
- » Smooth middle for an ergonomic grip
- » 2 built-in QD sockets
- » Steel barrel nut and all mounting hardware included
- » 1.357" ID

Size	Weight	●	●	●
With Anti-Rotation Tabs				
7"	11.10 oz	PS-223MLK7GBLK	PS-223MLK7GTAN	PS-223MLK7GOD
10"	14.05 oz	PS-223MLK10GBLK	PS-223MLK10GTAN	PS-223MLK10GOD
12"	14.95 oz	PS-223MLK12GBLK	PS-223MLK12GTAN	PS-223MLK12GOD
15"	17.20 oz	PS-223MLK15GBLK	PS-223MLK15GTAN	PS-223MLK15GOD
No Anti-Rotation Tabs				
7"	8.50 oz	PS-223MLK7GBLK-NAR	PS-223MLK7GTAN-NAR	PS-223MLK7GOD-NAR
10"	11.55 oz	PS-223MLK10GBLK-NAR	PS-223MLK10GTAN-NAR	PS-223MLK10GOD-NAR
12"	12.45 oz	PS-223MLK12GBLK-NAR	PS-223MLK12GTAN-NAR	PS-223MLK12GOD-NAR
15"	14.70 oz	PS-223MLK15GBLK-NAR	PS-223MLK15GTAN-NAR	PS-223MLK15GOD-NAR

HANDGUARD K STYLE



PS-223MLK7/10/12/15K
AR-15 Ultra-Lightweight Minimalist Rail Handguard

Designed as a minimalist rail, our newest and most lightweight handguard design boasts up to 8 M-LOK rail slots (in 15" variant) on both the 90 and 45 degree orientations for maximum versatility in accessory mounting options. Available in both partial and full picatinny top rail configurations.

- » Mil-Spec type II black anodized
- » Barrel nut and installation hardware included
- » Ultra-lightweight

Size	Weight	Full Top Rail With Anti-Rotation Tabs	Full Top Rail No Anti-Rotation Tabs	Partial Top Rail With Anti-Rotation Tabs
7"	8.80 oz-9.20 oz	PS-223MLK7KBLK-F	Not Available	PS-223MLK7KBLK-H
10"	10.80 oz-11.20 oz	PS-223MLK10KBLK-F	Not Available	PS-223MLK10KBLK-H
12"	9.40 oz-12.70 oz	PS-223MLK12KBLK-F	PS-223MLK12KBLK-F-NAR	PS-223MLK12KBLK-H
15"	11.30 oz-15.00 oz	PS-223MLK15KBLK-F	PS-223MLK15KBLK-F-NAR	PS-223MLK15KBLK-H

HANDGUARD ACCESSORIES



PS-AGH2 AR-15 NSR Style Barrel Nut Shim (3 Pcs in Pack)

Our NSR style barrel nut shims ensures the perfect alignment of your barrel nut and gas tube. Offered in a 3 pack, each shim measures at .001” thickness offering you the precise adjustment necessary in any custom rifle build.

FORWARD GRIPS



PS-FG23B Glass Filled Polymer Vertical Grip

This picatinny rail vertical grip is designed with deep finger grooves for an ergonomic and stable gripping surface.

- » Full-size vertical foregrip
- » Ergonomic textured design with finger grooves
- » Ideal for rifles setup with quad rails or rail systems under the forend
- » A flat non-slip bottom surface aids in supported firing positions
- » Material: Injection molded polymer
- » Made in the USA

SKU	COLORS
PS-FG23B	●
PS-FG23T	●

PS-FG2B Ergonomic Full-Size Vertical Grip with Storage Compartment

Built for comfort, our Ergonomic Vertical Grip utilizes deep finger grooves and a palm swell to maximize contact surface with a shooter’s support hand resulting in increased stability for both right and left-handed operators.

- » Full-size vertical grip
- » Textured finger grooves
- » Ergonomically designed for maximum grip and comfort
- » Includes storage compartment
- » Fits picatinny style rails
- » Made in the USA

SKU	COLORS
PS-FG2B	●



MUZZLE BRAKES



PS-MZ4GR
AR-15 Muzzle Brake

Our 3 baffle, 2 port muzzle brake does a fantastic job in redirecting blast and concussion away from the shooter resulting in muzzle rise reduction for faster and more accurate follow-up shots.

- » Ideal for competitive shooters
- » Proven 3 baffle system
- » 2 large side ports
- » 1/2-28 thread for .223/5.56 only
- » Phosphate finish



PS-MZ8
Sidewinder Blast Diffuser

The JE Machine Tech Sidewinder Blast Diffuser is engineered to divert the concussion and side blast forward instead of venting to the side. Additionally, the Sidewinder reduces dust when firing from a prone position that would traditionally be seen when firing with a standard flash hider or muzzle brake.

- » Improves comfort and safety for the shooter and those nearby the firing lane
- » 1/2-28 thread for .223/5.56 only
- » Machined 4140 steel
- » Available in Black Nitride finish
- » Fluted design



PS-MZ6
AR-15 Muzzle Brake

Machined from 4140 steel and cut with 2 ventilation ports and 2 baffles, the JE Machine Tech AR-15 muzzle brake is a perfect melding of strength and performance.

- » 2 ports
- » 2 baffles
- » Phosphate finish
- » 1/2-28 thread for .223/5.56 only



PS-MZ7
.30 Caliber Muzzle Brake

Machined from 4140 steel and cut with 2 ventilation ports and 2 baffles, the JE Machine Tech .30 Cal muzzle brake is a perfect melding of strength and performance.

- » 2 ports
- » 2 baffles
- » Phosphate finish
- » 5/8-24 thread for .30 Caliber only

MUZZLE BRAKES



TS-MZ22B
.223/5.56 Standoff Muzzle Brake

Designed with 2 gas ports and 3 baffles for maximum recoil mitigation and aggressively styled prongs, our unique muzzle brake is sure to turn heads.

- » Designed for .223/5.56 barrels
- » 2 recoil reducing ports and 3 baffles
- » 6 door breaching prongs



TS-MZ23B
.30 Caliber Standoff Muzzle Brake

Designed with 2 gas ports and 3 baffles for maximum recoil mitigation and aggressively styled prongs, our unique muzzle brake is sure to turn heads.

- » Designed for .30 Caliber barrels
- » 2 recoil reducing ports and 3 baffles
- » 6 door breaching prongs



TS-FH2B
A2 Birdcage Flash Hider

In use for over 55 years, the classic A2 flash hider has been the tip of the spear for American troops in every major modern conflict since the Vietnam War. Whether building a clone rifle or just looking for superior flash signature reduction, you can't go wrong with this classic.

- » 1/2-28 thread for .223/5.56 only
- » Phosphate finish



TS-FH3B
A2 Style .30 Caliber Flash Hider

In use for over 55 years, the classic A2 flash hider has been the tip of the spear for American troops in every major modern conflict since the Vietnam War. Whether building a clone rifle or just looking for superior flash signature reduction, you can't go wrong with this classic.

- » 5/8" - 24 thread for .30 Caliber only
- » Phosphate finish



CARRY HANDLE



TS-CH2 Mil Spec AR-15 Detachable Carry Handle

Increase the functionality and versatility of your AR-15 with our aluminum Mil-Spec detachable Carry handle. Compatible with Mil-Spec height BUIS or triangular F marked front sight base.

- » A2 style dual sight aperture for close- and long-range targets
- » Manufactured from 6061 T6 Aluminum
- » Positive engagement windage and elevation adjustments
- » Universal picatinny rail attachment clamps for mounting on any flat top receiver

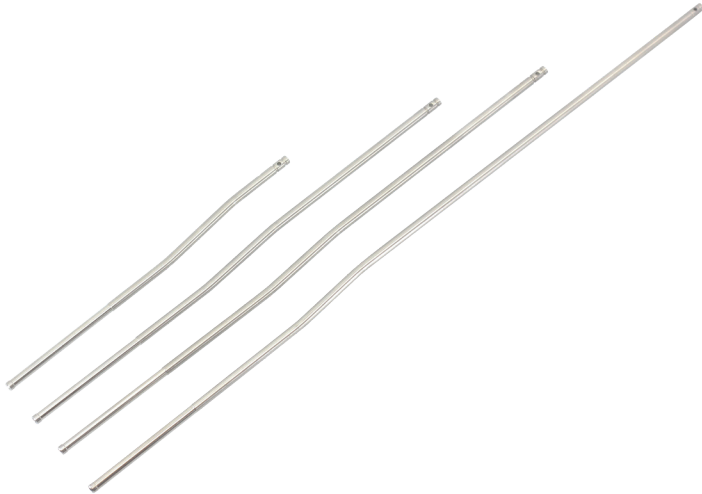
GAS COMPONENTS



TS-GB4
AR-15 Gas Block-.750 5.56 .223
Low-Profile Design

Our low-profile steel gas block fits under a free-float handguard and mounts securely to the barrel with the included set screws.

- » .750 diameter (tolerance within .002)
- » 2 hex head set screws
- » Weight: 2 oz



PS-SSGT
Stainless Steel Gas Tube

Our stainless steel gas tubes are available in pistol, carbine, mid, and rifle lengths. These high-quality Mil-Spec gas tubes for your AR uppers are perfect for completing a build or replacing worn parts.

- » Material: Stainless steel
- » For reliable performance

SKU	NAME
PS-SSGT2	Stainless Steel Pistol Length Gas Tube
PS-SSGT3	Stainless Steel Carbine Length Gas Tube
PS-SSGT4	Stainless Steel Mid-Length Gas Tube
PS-SSGT5	Stainless Steel Rifle Length Gas Tube

SIGHTS



TS-PS7B
Flip Up Iron Sights

- » Set includes both front and rear sights
- » Quick, automatic deploy system that springs up with the push of a button
- » Both front and rear sights lock positively in the folded and deployed positions
- » Mounts to a picatinny rail
- » Dual aperture
- » Windage and elevation adjustable

SKU	MATERIAL	COLORS
TS-PS7B	Glass Filled Polymer	●
TS-PS7B-AL	Aluminum	●



TS-PS8B
45 Degree Fixed
Offset Iron Sights

- » Set includes both front and rear sights
- » Easy to install
- » Includes windage and elevation adjustment
- » Mounts to a picatinny rail
- » Dual aperture

SKU	MATERIAL	COLORS
TS-PS8B	Glass Filled Polymer	●
TS-PS8B-AL	Aluminum	●



TS-PS9B
45 Degree Offset
Flip-Up Iron Sights

- » Set includes both front and rear sights
- » Easy to install
- » Includes windage and elevation adjustment
- » Mounts to a picatinny rail
- » Dual aperture
- » Flip-up feature

SKU	MATERIAL	COLORS
TS-PS9B	Glass Filled Polymer	●
TS-PS9B-AL	Aluminum	●



TS-PS22B
Polymer Flip-Up Iron Sights

- » Set includes both front and rear sights
- » Quick, automatic deploy system that springs up with the push of a button
- » Both front and rear sights lock positively in the folded and deployed positions
- » Mounts to a picatinny rail
- » Dual aperture
- » Windage and elevation adjustable

SKU	MATERIAL	COLORS
TS-PS22B	Glass Filled Polymer	●



TS-PS25B
Folding Back Up Battle Sights

- » Set includes both front and rear sights
- » Quick manual deploy system
- » Both front and rear sights lock positively in the folded and deployed positions
- » Mounts to a picatinny rail
- » Dual aperture
- » Windage and elevation adjustable
- » HK style front sight hood

SKU	MATERIAL	COLORS
TS-PS25B	Aluminum	●

UPPER RECEIVER PARTS



PS-DC4B QD Lightweight AR-15 Dust Cover .223 5.56

Engineered for reduced weight and ease of installation, our innovative lightweight QD Dust Cover offers a perfect solution for shooters and builders.

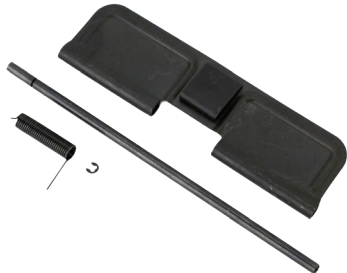
- » Made from ultra-high strength polymer
- » Lightning cuts for maximum weight reduction
- » Easy installation with the use of our push-button QD system
- » Compatible with all standard AR-15 upper receivers



TS-FA2B AR-15 Forward Assist Assembly

- » Mil-Spec AR-15/AR-10 forward assist kit
- » Features a tool steel forward assist pawl and press fit/pinned cap
- » Includes forward assist assembly, spring, and installation pin
- » Weight: < 1 oz

SKU	COLORS
TS-FA2B	●
TS-FA2BLU	●
TS-FA2RED	●



TS-DC2B AR-15 Ejection Port Cover

- » Dust cover
- » Steel spring
- » Steel rod
- » C-clamp
- » Weight: < 1 oz

SKU	COLORS
PS-DC2B	●

UPPER RECEIVER PARTS



PS-BCG3 AR-15 Bolt Carrier Group

The beating heart of any rifle is the bolt and carrier. All of our BCGs are manufactured from 9310 CrMoV Steel, Magnetic Particle Inspected (MPI), and properly staked gas key to ensure maximum durability and reliable performance.

Compatible with a wide range of calibers, our Bolt Carrier Group is the perfect choice for any build.

- » Multi-caliber compatibility: .223/5.56 NATO/.300 Blackout/.350 Legend
- » Manufactured: 9310 CrMoV steel
- » MPI tested
- » Available in Black Nitride finish
- » Properly staked gas key



PS-ARCH2B AR-15 Mil-Spec Charging Handle

- » Standard AR-15 charging handle
- » Machined from 6061 T6 aluminum
- » Anodized finish
- » Weight: ~ 1 oz

SKU	COLORS
PS-ARCH2B	●
PS-ARCH2BLU	●
PS-ARCH2RED	●



PS-ARCH3B AR-10/LR-308 Charging Handle

- » Standard AR-10 charging handle
- » Machined from 6061 T6 aluminum
- » Anodized finish
- » Weight: 1.4 oz

SKU	COLORS
PS-ARCH3B	●



LOWER RECEIVER PARTS



TS-ARASS2B
AR Ambi Safety Selector

The JE Machine Tech Ambi Safety Selector is perfect for both left and right handed shooters. Constructed from high-strength aluminum and available in various anodized colors, it features an interchangeable short throw lever to improve trigger engagement.

- » Fully ambidextrous
- » 90-degree standard throw lever
- » Drop in replacement for Mil-Spec safety selector
- » Deep serrations and ergonomic shape

SKU	COLORS
TS-ARASS2B	●
TS-ARASS2T	●
TS-ARASS2G	●
TS-ARASS2R	●
TS-ARASS2BLU	●



TS-ARMRA2B
AR Magazine Release Assembly

The JE Machine Tech AR Magazine Release Assembly is a direct OEM replacement part for the AR-15 and LR-308. These components are made to strict military specifications, and are perfect for replacing worn or broken parts.

- » Includes magazine release, magazine release spring, and magazine release button

SKU	COLORS
TS-ARMRA2B	●
TS-ARMRA2R	●
TS-ARMRA2BLU	●



TS-ARAWP2B
AR Anti Walk/Anti Rotation Pin Set

An often overlooked, but crucial component of your AR-15 is your trigger and hammer pin. During sustained fire sessions, or over time, the pins from your fire control group tend to rotate causing premature damage to your rifle/pistol. Our Anti-Walk pins are designed to prevent these critical components from failing when you need them the most.

- » OEM-Spec to work with OEM spec FCGs and lower receivers
- » One-piece dog bone style connectors to prevent rotation
- » All hardware included for installation

SKU	COLORS
TS-ARAWP2B	●

LOWER RECEIVER PARTS



TS-TG2
AR-15 Advanced Trigger Guard

Designed to be universally compatible with Mil-Spec receivers, the JE Machine Tech line of trigger guards are cut with a slight relief, making the use of gloves easier while shooting.

- » Non-folding
- » Rounded edges
- » Provides clearance when shooting with gloves
- » Type II anodized
- » Engraving options: American flag, Spartan helmet, Punisher skull

SKU	COLORS
TS-TG2	●
PS-TG2-2	●
PS-TG2-3	●
PS-TG2-4	●
TS-TG5	●



TS-TG2
AR-15 Advanced Trigger Guard



PS-TG2-2
AR-15 Advanced Trigger Guard



PS-TG2-3
AR-15 Advanced Trigger Guard



PS-TG2-4
AR-15 Advanced Trigger Guard



TS-TG5
Skeletonized AR-15 Advanced Trigger Guard

LOWER RECEIVER PARTS



TS-TG3
AR-15 Oversized Trigger Guard

Constructed with a generous arch to accommodate cold weather and maritime gloves, the JE Machine Tech line of extended trigger guards are the perfect addition to any utility-built AR.

- » Non-folding
- » Rounded edges
- » Provides clearance when shooting with gloves
- » Type II anodized
- » Engraving options: American flag, Spartan helmet, Punisher skull

SKU	COLORS
TS-TG3	●
PS-TG3-2	●
PS-TG3-3	●
PS-TG3-4	●
TS-TG4	●



TS-TG3
AR-15 Engraved Trigger Guard



PS-TG3-2
AR-15 Advanced Trigger Guard



PS-TG3-3
AR-15 Advanced Trigger Guard



PS-TG3-4
AR-15 Advanced Trigger Guard



TS-TG4
Skeletonized AR-15 Advanced Trigger Guard

LOWER PARTS KIT

TS-LPKAR15-RSS Mil-Spec AR-15 Lower Parts Kit

Manufactured to meet or exceed industry standards, the JE Machine Tech complete lower parts kit is the one-stop solution for assembling, repairing, or refurbishing any AR style rifle.

- Includes:
- » Black A2 pistol grip

» Pistol grip screw

» Pistol grip lock washer

» Trigger guard

» Trigger guard roll pin

» Standard trigger

» Trigger spring

» Trigger pin

» Hammer

» Hammer spring

» Hammer pin

» Disconnecter

» Disconnecter spring

» Single safety selector
- » Selector spring

» Selector detent

» Bolt catch spring

» Bolt catch

» Bolt catch roll pin

» Bolt catch detent

» Magazine catch button

» Magazine catch

» Magazine catch spring

» Front pivot pin

» Pivot pin detent spring

» Pivot pin detent

» Takedown pin

» Takedown detent

» Takedown detent spring

» Buffer retainer pin

» Buffer retainer spring



PISTOL GRIPS

PS-PG2B AR Ergonomic Pistol Grip

Molded to fit the natural contours of the hand, our AR Ergonomic Pistol Grip is an excellent choice for new and seasoned shooters alike. Constructed from a textured high strength, impact-resistant polymer, this grip was designed to help the shooter maintain proper control of the rifle in the most adverse conditions. In addition, it has a built-in storage compartment equipped with an easy-access trap door. This compartment is perfect for storing small items such as rifle lube, CR123A batteries, and ear protection.

- » Impact-resistant, high-strength polymer
- » Ergonomic non-slip design
- » Integrated extended beavertail provides better control when firing
- » Hinged door in the bottom of the grip for quick storage access
- » Made in the USA

SKU	COLORS
PS-PG2B	<div></div>
PS-PG2T	<div></div>



PS-PG2B-CA AR Compliance Pistol Grip

Boasting many of the same features as our traditional ergonomic pistol grip, our Compliance Pistol Grip allows the user to convert their AR build to meet changing laws while maintaining a level of comfort when manipulating their rifle. With comfort in mind, this pistol grip was manufactured with the fin directly in the middle of the back strap. This allows left, right, and ambidextrous shooters the ability to comfortably control any rifle equipped with this grip.

- » Impact-resistant, high-strength polymer
- » Ergonomic non-slip design
- » Integrated extended beavertail provides better control during firing
- » Hinged door in the bottom of the grip for quick access to the storage
- » Easy to install by replacing the stock grip, no gunsmithing required
- » CA compliant edition
- » Made in the USA

SKU	COLORS
PS-PG2B-CA	<div></div>
PS-PG2T-CA	<div></div>



PISTOL GRIPS



PS-PG4B Textured Rubber Pistol Grip

Precisely molded for maximum ergonomics, the palm swell and finger grooves are designed to ensure proper hand placement for excellent trigger control and shooting comfort.

- » Impact-resistant, high-strength polymer
- » Replacement for AR-15 A2 pistol grip
- » All around rubber over-molding
- » Unique back strap design for proper trigger finger placement and grip
- » Aggressive texturing for maximum grip
- » Storage compartment
- » One piece design
- » Made in the USA

SKU	COLORS
PS-PG4B	●
PS-PG4GREY	●



PS-PG5B Titan AR Pistol Grip

Developed to be the apex of shooter comfort and rifle control, our Titan Grips' ergonomic design makes it an obvious choice for precision long-range and competition shooting. The Titan Grip's contours conform naturally to the hand providing ample comfort and reduced fatigue. The added addition of the right thumb shelf increases the overall ergonomics of the grip while allowing the user to obtain increased control over the rifle.

- » Impact-resistant, high-strength polymer
- » Heavy-duty grip
- » Built-in finger grooves for a solid grip
- » Easy to install, no gunsmithing required
- » Made in the USA

SKU	COLORS
PS-PG5B	●
PS-PG5T	●

PISTOL GRIPS



PS-PG6B Panther Style Pistol Grip with Adjustable Stand

The ergonomically enhanced JE Machine Tech Tactical Deluxe Grip with palm shelf fits small and large frames. The palm shelf feature increases stability and weapon control. Ambidextrous palm swell provides shooters with proper trigger finger placement.

- » Adjustable palm shelf for multiple hand positions
- » Enhanced trigger control
- » Made of high-strength black polymer
- » Made in the USA

SKU	COLORS
PS-PG23B	●

PS-PG23B Ergonomic Anti-Slip Pistol Grip

Designed with a wide, hand-filling palm swell and curved finger grooves, this grip provides the shooter with all of the support needed for a comfortable and secure grip while minimizing shooter fatigue.

- » Impact-resistant, high-strength polymer
- » Concealed storage compartment for accessories
- » Anti-slip texture for firm handling
- » Ergonomic design
- » Made in the USA

SKU	COLORS
PS-PG23B	●



PISTOL GRIPS



PS-PG25B 1911 AR Pistol Grip

Modeled after the iconic 1911 family of handguns, our AR 1911 Pistol Grip allows the user to equip their rifle with the tried-and-true ergonomics of the 1911. Constructed from durable 6061-T6 aluminum and milled to a tolerance that will accept most 1911 grip panels, this pistol grip is the perfect addition for any AR enthusiast who enjoys the look and feel of the iconic 1911 handgun.

- » 6061-T6 aluminum
- » Allows you to further customize your AR platform
- » Works with all Mil-Spec AR lower receivers
- » Maintains comfort and performance
- » Works with most full size grip panels

SKU	COLORS
PS-PG25B	●
PS-PG25T	●
PS-PG25OD	●
PS-PG25RED	●
PS-PG25BLU	●



TS-PG27B A2 Pistol Grip

From the original M16A2 to the modern M4 carbine and everything in between, the A2 Pistol Grip has been the standard issue for all of them. No bells and whistles, just a simple design that just works.

- » Fits any receiver that accepts the AR-15/AR-10 pistol grip mounting profile
- » Mounting hardware included

SKU	COLORS
PS-PG27B	●





BUFFER TUBES

PS-BTM BUFFER TUBES Mil-Spec Buffer Tubes

Constructed of 6061-T6 aluminum with meticulous care given to each cut, our Mil-Spec buffer tubes are sure to be the perfect choice for any range toy or utility build. Our buffer tubes come in standard, slotted, arrow, and dotted designs. Available in a variety of colored finishes and compositions (7075-T6 available for standard) to meet specialty needs.

- » Mil-Spec
- » Type II anodized (Standard)
- » Type III anodized (Standard-7075, Standard-DH, Slotted, Arrow, and Dotted)
- » 6061-T6 aluminum (7075 available for standard style)
- » 6 positions



*Standard



*PS-BTM-DH - With Drain Holes

Style	Weight	●	●	●	●	●
Standard	3.8 oz	PS-BTM	PS-BTM TAN	PS-BTM MOD	PS-BTM RED	PS-BTM BLU
Standard-7075	3.9 oz	PS-BTM-7075				
Standard-DH	3.6 oz	PS-BTM-DH	PS-BTM TAN-DH	PS-BTM MOD-DH	PS-BTM RED-DH	PS-BTM BLU-DH
Slotted	2.9 oz	PS-BTM2	PS-BTM2 TAN	PS-BTM2 OD	PS-BTM2 RED	PS-BTM2 BLU
Arrow	3.3 oz	PS-BTM3	PS-BTM3 TAN	PS-BTM3 OD	PS-BTM3 RED	PS-BTM3 BLU
Dotted	3.2 oz	PS-BTM4	PS-BTM4 TAN	PS-BTM4 OD	PS-BTM4 RED	PS-BTM4 BLU



PS-BTM
Standard



PS-BTM2
Slotted



PS-BTM3
Arrow



PS-BTM4
Dotted

BUFFER TUBES



PS-BTMS2
8 Position Mil-Spec Anti-Friction Fluted Buffer Tube

Designed from the ground up to be feature-packed, our 8 Position Mil-Spec Anti-Friction Fluted Buffer Tube is a must-have for any hardcore AR enthusiast. Machined with ten recessed channels that provide both weight and friction reduction, this buffer tube will allow even the tightest Mil-Spec stocks to slide with ease.

- » Recessed pockets for weight reduction
- » 3 drain holes for marine environments
- » Type III hard-coat anodized 6061-T6 aluminum
- » 8 position Mil-Spec diameter buffer tube
- » Accepts all Mil-Spec stocks
- » AR-15 & AR-10 compatible
- » Weight: 3.2 oz

SKU	COLORS
PS-BTMS2	●
PS-BTMS2TAN	●
PS-BTMS2OD	●
PS-BTMS2RED	●
PS-BTMS2BLU	●



PS-BTMS5
6 Position Mil-Spec Fluted Buffer Tube

Manufactured to be the pinnacle of our 6-position Mil-Spec line, the JE Machine Tech Fluted Buffer Tube is a culmination of many industry-leading features. Milled with seven fluted channels, this buffer tube provides ample weight reduction while lowering the felt friction of the stock. Much like our BTM-DH, this buffer tube also comes with three drain holes that are milled into the rear position locks.

- » Deep fluting for weight reduction
- » 3 drain holes for marine environments
- » Type III hard-coat anodized 6061-T6 aluminum
- » 6 position Mil-Spec diameter buffer tube
- » Accepts all Mil-Spec stocks
- » AR-15 & AR-10 compatible
- » Weight: 3.3 oz

SKU	COLORS
PS-BTMS5	●
PS-BTMS5TAN	●
PS-BTMS5OD	●
PS-BTMS5RED	●
PS-BTMS5BLU	●



BUFFER TUBES

PS-BTP BUFFER TUBES Pistol Buffer Tubes

Designed from the ground up to meet compliance standards while providing the maximum number of features, the JE Machine Tech line of pistol buffer tubes are the perfect addition to any AR pistol. Cut from 6061-T6 aluminum and finished with a type III hard coat anodized finished, you can rest assured your JE Machine Tech pistol buffer tubes are manufactured to go the distance.

- » Type III anodized (Standard)
- » Type II anodized (Recessed, Fluted, and Skeletonized)

Style	Weight	●	●	●	●	●
Standard	4.5 oz	PS-BTP-NF	PS-BTP-NF-TAN	PS-BTP-NF-OD	PS-BTP-NF-RED	PS-BTP-NF-BLU
Recessed	3.8 oz	PS-BTP2	PS-BTP2TAN	PS-BTP2OD	PS-BTP2RED	PS-BTP2BLU
Fluted	3.5 oz	PS-BTP3	PS-BTP3TAN	PS-BTP3OD	PS-BTP3RED	PS-BTP3BLU
Skeletonized	3.2 oz	PS-BTP4	PS-BTP4TAN	PS-BTP4OD	PS-BTP4RED	PS-BTP4BLU



RIFLE BUFFER TUBE & COMPONENTS

A2 Rifle Buffer Tube And Components

Here at JE Machine Tech, we construct our A2 buffer tubes from 6061-T6 aluminum to ensure the longevity and survivability of our product. The JE Machine Tech A2 buffer tube is the perfect choice for any restoration or retro-build AR.

When installing an A2 rifle stock on your AR-15, the stock spacer is an often overlooked but critical component in the build process. Our A2 stock spacer and spacer screw are precisely engineered to ensure perfect alignment between your A2 buffer tube and rifle stock making installation a breeze.

In line with the evolution of Eugene Stoner’s original design, the M16A2 Service Rifle was seen by many as the next generation of self-loading centerfire rifles. Arguably the most notable change was the vast improvement in felt recoil mainly due to the smaller cartridge (.223/5.56) and the innovative straight-through buffer system. JE Machine Tech pays homage to that proud lineage by offering our A2 rifle length buffer components for both the AR-15 and LR-308 platform. Whether equipped in a retro rifle build or a state-of-the-art precision rifle, our system will deliver reliable performance for years to come.

SKU	COMPONENT
PS-BTA	A2 Buffer Tube
PS-ABT3	A2 Rifle Length Buffer Spring Long
TS-ABT2	A2 Buffer Tube Screw
TS-ABT24	A2 Buffer Tube Spacer
TS-ABT5G	A2 Rifle Length Buffer



BUTTSTOCKS



Battery Storage



Wide Cheek Weld



CA Compliant Edition Available

PS-ST7B JE Machine AR SOPMOD Stock

A modern take on a tried-and-true platform, the JE Machine Tech AR SOPMOD Stock pays homage to the iconic system designed by NSWC Crane in the early 2000s. Unlike the classic NSWC Crane design, the JE Machine Tech variant comes equipped with a quick detach sling mount built into the stock body. In addition, our SOPMOD stock is made from modern high-strength, impact-resistant polymers to ensure years of service.

- » Sloping cheek weld provides a wide contact surface for user comfort
- » Integrated quick detach sling swivel sockets on both sides
- » Watertight battery storage for CR123A 3V lithium batteries
- » Impact-resistant, high-strength polymer
- » Fits Mil-Spec carbine buffer tubes
- » CA compliant edition available
- » Made in the USA

SKU	COLORS
PS-ST7B	●
PS-ST7T	●
PS-ST7G-B	●
PS-ST7GREY-B	●
* California Compliant Edition Available	
PS-ST7B-CA	●
PS-ST7T-CA	●
PS-ST7G-B-CA	●
PS-ST7GREY-B-CA	●

BUTTSTOCKS



QD Slots



Butt Pad Available
(Length: 5.5" Width: 1.9" Thickness: 1")

PS-ST32B JE Machine Adaptive Skeletonized AR Buttstock

Designed to be ergonomic while reducing weight, our Adaptive Skeletonized AR Buttstock is an easy choice for anyone looking to update a classic rifle. Constructed from high-strength, impact-resistant polymer, our stock is built to provide years of service in the harshest environments.

In addition, this stock is equipped with forward and rear quick detach mounting points, and is available in black or tan.

- » Strong and robust design
- » Two QD sockets, one in the front and one at the rear
- » Impact-resistant, high-strength polymer
- » Fits Mil-Spec carbine buffer tubes
- » Made in the USA
- » Weight: 8.8 oz

SKU	COLORS
PS-ST32B	●
PS-ST32T	●
BUTT PAD	
TS-AST2B	●
TS-AST2G	●

BUTTSTOCKS

QUALITY. INTEGRITY. INNOVATION.



CA Compliant Edition Available



Butt Pad Available
(Length: 5.5" Width: 1.9" Thickness: 1")

PS-ST2B
JE Machine M4 Collapsible AR Buttstock

Refined and strengthened while maintaining the iconic appearance of the M4 stock, the JE Machine Tech Mil-Spec variant stock is designed to provide reliable service under the most stringent conditions. Constructed from high-strength, impact-resistant polymer, this stock is an easy choice for any build.

- » High quality injected molded polymer
- » Fits Mil-Spec carbine buffer tubes
- » CA compliant edition available
- » Made in the USA

SKU	COLORS
PS-ST2B	●
PS-ST2T	●
* California Compliant Edition Available	
PS-ST2B-CA	●
PS-ST2T-CA	●
BUTT PAD	
TS-AST3B	●
TS-AST3G	●

BUTTSTOCKS



CA Compliant Edition Available

PS-ST8B
Mil-Spec Skeletonized A-Frame Stock

The Mil-Spec Skeletonized A-Frame Stock is the minimalist version of the Skeleton A-Frame Stock with a removable recoil butt pad. The A-frame is designed for weight reduction and it's streamlined contours eliminates snagging on clothing or gear, for safer and faster weapon deployment during CQB engagement.

- » Mil-Spec fitment (commercial spec available)
- » Single-point ambidextrous QD attachment
- » Modular removable recoil reduction butt pad
- » Impact-resistant, high-strength polymer
- » CA compliant edition available
- » Made in the USA
- » Weight: 10.8 oz

SKU	COLORS
PS-ST8B	●
* California Compliant Edition Available	
PS-ST8B-CA	●

BUTTSTOCKS



PS-ST9B
Mil-Spec 6 Position Micro Stock

The Mil-Spec 6 Position Micro Stock is the retro production of the Colt Fiberlite CAR SOPMOD stock found on the BLOCK 1 M4A1 carbine.

- » Mil-Spec fitment (commercial spec available)
- » Compact and light-weight originally designed for SOPMOD BLOCK 1 M4A1 CQB multi-purpose rifle
- » Precise fitment eliminates excessive wobble movement for weapon stability and accuracy
- » 6 position
- » Impact-resistant, high-strength polymer
- » Made in the USA
- » Weight: 4.69 oz



CA Compliant Edition Available

SKU	COLORS
PS-ST9B	●
* California Compliant Edition Available	
PS-ST9B-CA	●

BUTTSTOCKS



PS-ST27B
Skeletonized Pistol Brace

Our Skeletonized Pistol Brace is manufactured to ensure a secure fit between the stabilizer and the pistol buffer tube. With the device secured, a shooter can apply lateral pressure on the fin allowing for a more stable shot. This pistol brace is a perfect addition to any AR pistol that requires greater accuracy while staying in compliance with federal regulations.

- » Ultra-lightweight
- » Securely lock in place with a set screw
- » Designed to fit any pistol buffer tube with a diameter up to 1.25"
- » Forearm strap slots
- » Impact-resistant, high-strength polymer
- » Made in the USA
- » Weight: 4.8 oz



SKU	COLORS
PS-ST27B	●

BUFFER COMPONENTS

Mil-Spec BTM Buffer Tubes
Buffer tubes sold seperately*



PS-BFSC4 .223 5.56 Silent Recoil Buffer Spring System

The JE Machine AR-15 Silent Recoil System is at the forefront of AR buffer technology. Our system is a drop-in replacement for the traditional AR-15 carbine spring and buffer. This revolutionary patented one-piece assembly eliminates many of the risks of other “cap screwed” recoil systems on the market while providing a reduction in buffer noise and felt recoil. Our PS-BFSC4 is constructed from high-strength 4140 steel. This system is truly a testament to our ingenuity and is a must-have for new and veteran shooters alike.

- » Self-contained & drop-in design for easy installation
- » Reduce felt recoil
- » Precision machined high-strength 4140 steel
- » One-piece design for improved reliability
- » For use with carbine buffer tubes only



BUFFER COMPONENTS

The JE Machine AR buffer components are a reliable and cost-effective option for any AR build.

TS-ABT8 Castle Nut



PS-ABT3 A2 .223 5.56 Spring

PS-ABT4 AR-15 Carbine Spring

PS-ABT29 .308 Carbine Spring



PS-ABT7B 3 oz Buffer



PS-ABT5G A2 .223 Buffer-Gold



PS-EP25 End Plate with QD



TS-EP23 Standard End Plate



TS-ABT28B .308 Carbine Buffer



PS-ABT6B A2 .308 Buffer-Black (Spring is coming soon)





PISTOL SLIDES

PS-G17/19/26 S2 JE Mako Slide

Our Mako slide carefully crafted to keep your pistol at the cutting edge of performance.

- » Manufactured from high-strength 4140 steel
- » Compatible with all Gen 1-3 Glock pattern frames
- » Aggressive vertical lightning cuts
- » Compatible with RMR, SRO, Holosun, ADE, and Swampfox red dots
- » Available in Black Nitride or FDE Cerakote finish

Glock	●	●
17	PS-G17S2B	PS-G17S2T
19	PS-G19S2B	PS-G19S2T
26	PS-G26S2B	PS-G26S2T



PS-G17/19/26 S3 JE Trinity Slide

Crafted and tested to perfectly balance form and function, our Trinity slides come packed with the latest industry-leading design features to deliver maximum performance and style to the world’s most popular handguns.

- » Manufactured from high-strength 4140 steel
- » Compatible with all Gen 1-3 Glock pattern frames
- » Functional 3 sided lightning cuts for maximum balanced weight reduction
- » Compatible with RMR, SRO, Holosun, ADE, and Swampfox red dots
- » Can be used with or without a ported barrel
- » Deep slide serrations to ensure positive contact for slide manipulations
- » Available in Black Nitride or FDE Cerakote finish

Glock	●	●
17	PS-G17S3B	PS-G17S3T
19	PS-G19S3B	PS-G19S3T
26	PS-G26S3B	PS-G26S3T

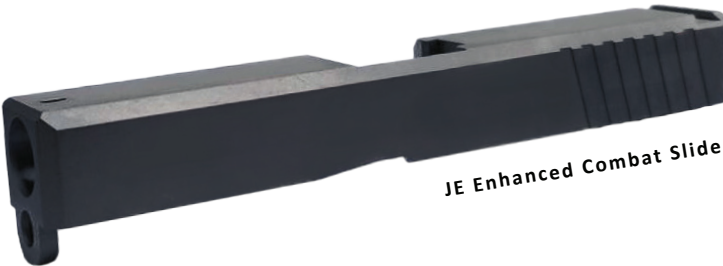


PS-G19 S4 JE Enhanced Combat Slide

Since it was first released in 1988, the Glock pistol has grown to become one of the most recognized and widely purchased handguns in the world. Our Combat slides offer the same reliability as the legendary handgun at a fraction of the cost.

- » Manufactured from high-strength 4140 steel
- » Compatible with all Gen 1-3 Glock pattern frames
- » Direct OEM replacement for a perfect fit
- » Available in Black Nitride finish

Glock	●
19	PS-G19S4B



SLIDE/LOWER PARTS KITS FOR GLOCK



Lower Parts Kit

Manufactured to meet OEM specs, the JE Machine Lower Parts Kit is the one-stop solution for assembling, repairing, or refurbishing your Glock patterned frames.

- » Slide stop release with spring
- » Locking block pin
- » Magazine release
- » Magazine release spring
- » Slide lock
- » Slide lock spring
- » Trigger housing pin
- » Trigger housing with 336 ejector
- » Connector
- » Trigger pin
- » Trigger spring
- » Trigger with trigger bar

MODEL	SKU
GLOCK 17 GEN 1-3	TS-LPKG17
GLOCK 19 GEN 1-3	TS-LPKG19
GLOCK 26 GEN 3	TS-LPKG26
GLOCK 43 GEN 5	TS-LPKG43



Full-Size/Compact Slide Parts Kit

Manufactured to meet OEM specs, the JE Machine Full-Size/ Compact Slide Parts Kit is the one-stop solution for assembling, repairing, or refurbishing your Glock patterned slides.

- » Firing pin
- » Firing pin spring
- » Firing pin spring cup
- » Firing pin safety
- » Firing pin safety spring
- » 9mm extractor
- » Extractor depressor plunger
- » Extractor depressor plunger spring
- » Channel liner
- » Spacer sleeve
- » Polymer cover plate
- » Stainless steel guide rod (guide rod, washer, screw)
- » Guide rod spring

MODEL	SKU
GLOCK 17 GEN 1-3	TS-SPKG17
GLOCK 19 GEN 1-3	TS-SPKG19

SLIDE/LOWER PARTS KITS FOR GLOCK



Subcompact Slide Parts Kit

Our Subcompact Slide Parts Kit is carefully crafted and meticulously inspected to exacting OEM specs. Our kit replaces the traditional polymer Guide Rod with a high-strength stainless steel unit to bring the very best out of your slide.

- » Extractor
- » Extractor depressor plunger
- » Extractor depressor plunger spring
- » Spring-loaded bearing
- » Slide cover plate
- » Firing pin
- » Spacer sleeve
- » Firing pin spring
- » Spring cups
- » Firing pin safety
- » Firing pin safety spring
- » Channel liner
- » Stainless steel guide rod and recoil spring assembly

MODEL	SKU
GLOCK 26 GEN 1-3	TS-SPKG26



Slide Parts Kit For Glock 43

Manufactured to meet OEM specs, the JE Machine Slide Parts Kit is the one-stop solution for assembling, repairing, or refurbishing your Glock 43.

- » Firing pin
- » Firing pin spacer sleeve
- » Spring cups
- » Firing pin spring
- » Guide rod
- » Extractor depressor plunger
- » Extractor depressor plunger spring
- » Extractor spring loaded bearing
- » Slide cover plate
- » Extractor with loaded chamber indicator
- » Firing pin safety plunger
- » Firing pin safety plunger spring

MODEL	SKU
GLOCK 43	TS-SPKG43

FCU PARTS KIT FOR SIG SAUER



TS-LPKSSP320 P320 9/.40/.357 FCU Parts Kit For Sig Sauer

This complete FCU Parts Kit includes all the upgraded pieces from Sig's voluntary drop-safe recall. This kit is completely compatible with any upgraded Sig P320 FCU/Slide in 9/.40/.357. This kit will not work with the .45ACP Sig P320 FCU.

- Includes:
- » Lightweight adverse trigger
 - » Sear housing
 - » Sear
 - » Safety lever
 - » Trigger bar
 - » Takedown safety lever
 - » Takedown lever with o-ring
 - » Mechanical disconnect
 - » Trigger bar spring
 - » Sear spring x2
 - » Takedown safety lever spring
 - » Sear housing pin
 - » Trigger bar stop pin
 - » Sear pin
 - » Slide catch lever pin
 - » Safety lever pivot pin



TS-SPKSSP320 9mm P320 Slide Parts Kit For Sig Sauer

Designed for a direct OEM fit, our 9 mm P320 Slide Parts Kit includes all the small components you need (barrel and guiderod not included) to complete your custom 9mm P320 slide build or refurbish your existing factory slide.

- Includes:
- » Slide cap in black, non-textured
 - » Striker assembly for 9mm
 - » Extractor
 - » Extractor Spring
 - » Extractor Spring Pin
 - » Extractor Spring Guide





BARRELS FOR AR



JE Machine Tech AR-15 platform barrels are constructed from the finest domestically sourced steel. Drilled, reamed, button-rifled, profiled, and chambered to exact dimensions in compliance with SAAMI specifications; our high-precision manufacturing processes ensure both accurate and repeatable performance for thousands of rounds.

- » AR-15 compatible
- » 4150 CrMoV steel
- » Available in Black Nitride finish

PS-BAL6
16" M4 Profile
.223 Wylde Barrel

- » Chambering: .223 Wylde
- » Twist rate: 1:8
- » Overall length: 16"
- » Gas system length: Carbine length
- » .750 gas block
- » Thread Pitch: 1/2-28

PS-BAL22
5" .223 Wylde
PDW Barrel

- » Chambering: .223 Wylde
- » Twist rate: 1:5
- » Overall length: 5"
- » Gas system length: Micro gas
- » .750 gas block
- » Thread Pitch: 1/2-28

PS-BAL7
7.50" Standard Profile
5.56 NATO Pistol Barrel

- » Chambering: .223/5.56x45 NATO
- » Twist rate: 1:7
- » Overall length: 7.5"
- » Gas system length: Pistol
- » .750 gas block
- » Thread Pitch: 1/2-28

PS-BAL8
10.25" Medium Profile
.223 Wylde Pistol Barrel

- » Chambering: .223 Wylde
- » Twist rate: 1:8
- » Overall length: 10.25"
- » Gas system length: Carbine length
- » .750 gas block
- » Thread Pitch: 1/2-28

PS-BAL9
12.5" Medium Profile
.223 Wylde Barrel

- » Chambering: .223 Wylde
- » Twist rate: 1:8
- » Overall length: 12.5"
- » Gas system length: Mid length
- » .750 gas block
- » Thread Pitch: 1/2-28

PS-BAL5
16" Medium Profile
.223 Wylde Barrel

- » Chambering: .223 Wylde
- » Twist rate: 1:7
- » Overall length: 16"
- » Gas system length: Mid length
- » .750 gas block
- » Thread Pitch: 1/2-28



BARRELS FOR AR



PS-BAL23



PS-BAL24



PS-BAL25



PS-BAL26

JE Machine Tech AR platform barrels are constructed from the finest domestically sourced steel. Drilled, reamed, button-rifled, profiled, and chambered to exact dimensions in compliance with SAAMI specifications; our high-precision manufacturing processes ensure both accurate and repeatable performance for thousands of rounds.

- » AR-15 compatible
- » 4150 CrMoV steel
- » Available in Black Nitride finish

PS-BAL23 4" 9mm Micro PCC Barrel

- » Chambering: 9mm
- » Twist rate: 1:10
- » Overall length: 4"
- » Profile type: Standard
- » Thread Pitch: 1/2-36

PS-BAL24 8" 9mm PCC Barrel

- » Chambering: 9mm
- » Twist rate: 1:10
- » Overall length: 8"
- » Profile type: Standard
- » Thread Pitch: 1/2-36

PS-BAL25 10" 9mm PCC Barrel

- » Chambering: 9mm
- » Twist rate: 1:10
- » Overall length: 10"
- » Profile type: Standard
- » Thread Pitch: 1/2-36

PS-BAL26 15.25" 9mm PCC Barrel

- » Chambering: 9mm
- » Twist rate: 1:10
- » Overall length: 15.25"
- » Profile type: Standard
- » Thread Pitch: 1/2-36

BARRELS FOR GLOCK



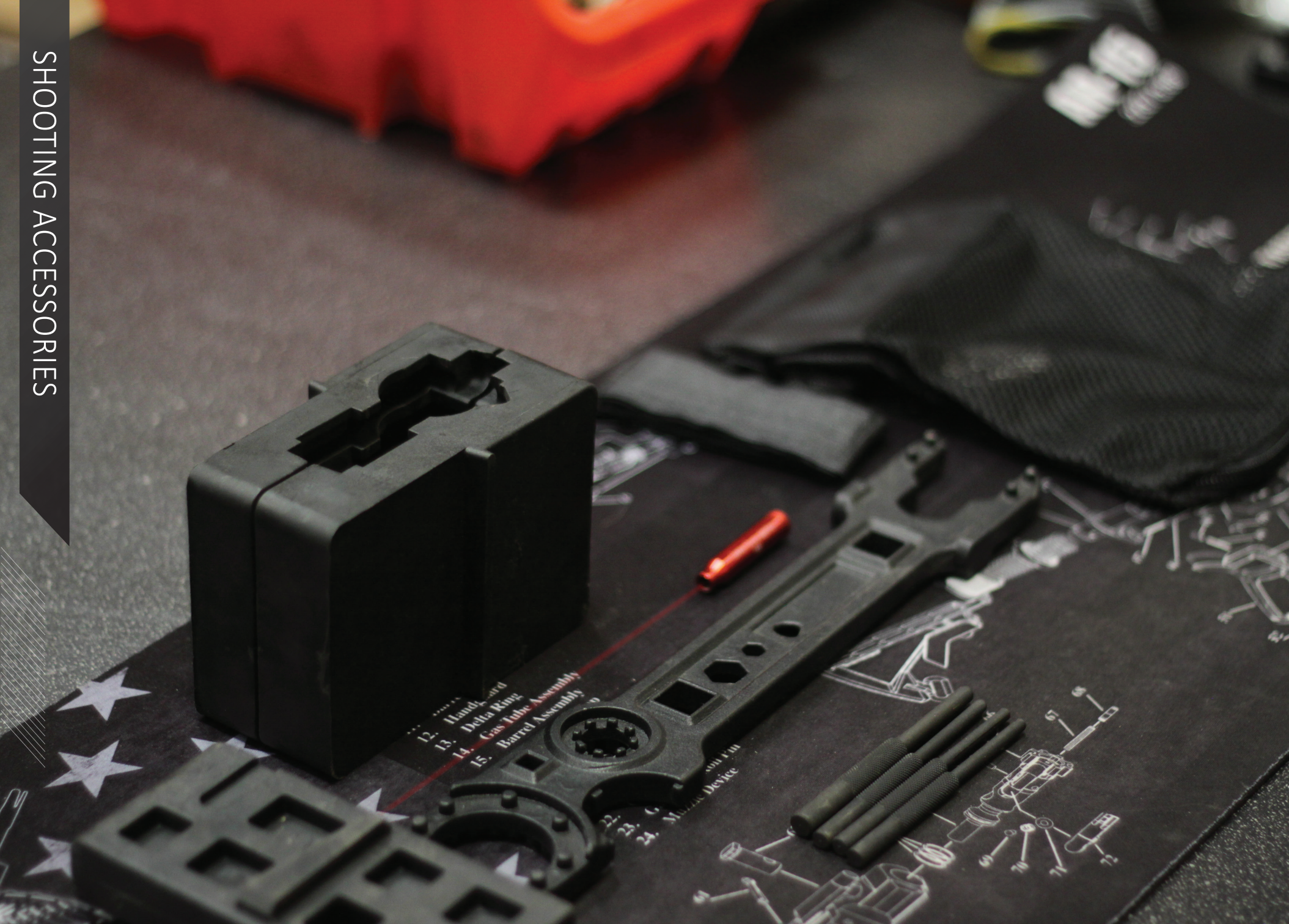
PS-BALG19 Barrels For Glock 19

JE Machine Tech’s pre-hardened precision barrels have been meticulously engineered to ensure maximum accuracy and lifespan. Our threaded barrels are suppressor and comp ready, and are available in both stainless steel and sleek Black Nitride finish.

- » 1:10 twist with 6 groove button rifling
- » Compatible with all Gen 1-4 Glock pistols
- » Threaded (1/2-28) or non-threaded barrels available
- » Available in stainless steel or Black Nitride finish

SKU	NAME	MATERIL
PS-BALG19TH-SS	Threaded barrel for G19 stainless steel	416R Stainless Steel
PS-BALG19TH	Threaded barrel for G19 Black Nitride finish	4150 Steel
PS-BALG19UT	Unthreaded barrel for G19 Black Nitride finish	4150 Steel





LASERS



TS-LS3B 5mW Pistol Red Laser Sight

- » Red 5 mW laser weaver-style mount
- » Excellent for quick target acquisition
- » Easy installation
- » Power: 650 nm
- » Wavelength: 5 mW
- » Batteries included
- » Weight: 2.24 oz



BORESIGHTERS



Laser Bore Sight

- » Material: High-quality aluminium
- » Battery life: 1.5-2 Hours of continuous use
- » Power Source: Three (3) LR41/LR44 button cell batteries
- » Minimum sighting range: 15 Yards
- » Wavelength: 625-660 nm.
- » Output power: Less than 5mW
- » Operation: On/off end cap
- » Package includes: x1 Bullet red dot laser + x3 batteries

Style	Weight	●	●	●	●
223 5mW Red Dot Laser Bore Sight	.02 lb	TS-BS223B	TS-BS223BR	TS-BS223G	TS-BS223R
30-06 5mW Red Dot Laser Bore Sight	.02 lb	TS-BS3006B	TS-BS3006BR	TS-BS3006G	TS-BS3006R
.308 5mW Red Dot Laser Bore Sight	.03 lb	TS-BS308B	TS-BS308BR	TS-BS308G	TS-BS308R
76254 5mW Red Dot Laser Bore Sight	.04 lb	TS-BS76254B	TS-BS76254BR	TS-BS76254G	TS-BS76254R
76239 5mW Red Dot Laser Bore Sight	.02 lb	TS-BS76239B	TS-BS76239BR	TS-BS76239G	TS-BS76239R
7mm 5mW Red Dot Laser Bore Sight	.05 lb	TS-BS7MMB	TS-BS7MMBR	TS-BS7MMG	TS-BS7MMR
8mm 5mW Red Dot Laser Bore Sight	.04 lb	TS-BS8MMB	TS-BS8MMBR	TS-BS8MMG	TS-BS8MMR
20GA 5mW Red Laser Bore Sight	.03 lb	TS-BS20GB	TS-BS20GBR	TS-BS20GG	TS-BS20GR
12GA 5mW Red Laser Bore Sight	.04 lb	TS-BS12GB	TS-BS12GBR	TS-BS12GG	TS-BS12GR

SHELL CATCHERS



TS-SC2B AR Tactical Shell Catcher

- » Minimal contact mounting
- » Ideal for the gun range
- » Captures and holds approximately 30 spent casings
- » Zipper at the bottom for easy removal
- » Absolutely no interference with the weapon’s cycling
- » For AR-15 and other AR platforms
- » Weight: 2.7 oz

SKU	COLORS
TS-SC2B	●
TS-SC2T	●
TS-SC2G	●



TS-SC3B .223/308 Quick Detach Shell Catcher

- » .223/.308 ejection port compatible
- » Captures and holds approximately 30 spent casings
- » Zipper at the bottom for easy removal
- » Absolutely no interference with the gun’s cycling
- » Weight: 3.5 oz

SKU	COLORS
TS-SC3B	●



TS-SC4B P90/PS90 Shell Brass Catcher

- » Brass collector for the PS90/P90
- » Easy to attach and remove
- » Retains up to 50 spent cases
- » Perfect for gun range
- » Weight: 1 oz

SKU	COLORS
TS-SC4B	●

SLINGS



TS-SL2B
1pt Bungee Sling

- » Heavy-duty 1 point bungee construction
- » Sling material: Nylon
- » Clip material: Steel
- » Provides maximum comfort
- » Reduces shoulder fatigue
- » Side-release button allows the operator to quickly disengage the sling if needed
- » Weight: 3.68 oz

SKU	COLORS
TS-SL2B	●
TS-SL2T	●
TS-SL2G	●



TS-SL5B
Quick Detach Convertible 1pt/2pt Sling

- » Fast transitions between single and two-point configuration
- » Sling material: Nylon
- » Clip material: Steel
- » Symmetrical para-clip
- » 1.25” wide nylon anti-chaff webbing
- » Adjustment buckle for sling tension in two-point mode
- » Weight: 6.88 oz

SKU	COLORS
TS-SL5B	●
TS-SL5T	●
TS-SL5G	●



TS-SL6B
1/2pt Quick Action Convertible Sling

- » Fast transitions between single and two-point configuration
- » Symmetrical para-clip
- » 1.25” wide nylon anti-chaff webbing
- » Adjustment buckle for sling tension in two-point mode
- » Sling material: Nylon
- » Clip material: Polymer
- » Weight: 6.4 oz

SKU	COLORS
TS-SL6B	●
TS-SL6T	●
TS-SL6G	●

SLINGS



TS-SL4B
3pt Tactical Sling with Detachable Hook

- » Heavy-duty 3 point bungee construction
- » Provides maximum comfort
- » Reduces shoulder fatigue
- » Side-release button allows the operator to quickly disengage the sling if needed
- » HK style hook

SKU	COLORS
TS-SL4B	●
TS-SL4T	●
TS-SL4G	●



TS-SL9B
Adjustable 2pt Tactical Bungee Sling with Improved HK Hook

- » Heavy-duty 2 point bungee construction
- » Provides maximum comfort
- » Reduces shoulder fatigue
- » HK style hooks

SKU	COLORS
TS-SL9B	●
TS-SL9T	●
TS-SL9G	●



TS-SL7B
Heavy Duty 2pt Tactical Bungee Sling

- » Heavy-duty dual bungee construction
- » Provides maximum comfort
- » Reduces shoulder fatigue
- » Designed with quick release buckles
- » Adjustable 49” - 66”
- » Material: Nylon
- » Can be used as a single or two point sling

SKU	COLORS
TS-SL7B	●
TS-SL7T	●
TS-SL7G	●



TS-SL22B
1pt Rapid Disconnect Sling With Mash Hook Attachment Point

- » Static one position design
- » Dual bungee design affords maximum range of motion
- » High-strength polymer adjustment buckles

SKU	COLORS
TS-SL22B	●

AR TOOLS



TS-GT4B Enhanced Spanner Wrench

Our entry level basic AR-15 Spanner Wrench allows for seamless installation of muzzle devices and castle nuts.

- » Armorer’s go-to tool
- » For AR platforms
- » Durable steel construction
- » Muzzle device wrench
- » Spanner wrench for old and new style castle nuts
- » Bottle opener
- » A1/A2 buffer tube adjustment
- » Lanyard/hanging hole
- » Ergonomic handle



TS-GT5 Multi-Function Armorer's All-in-One Tool

Our middleweight AR-15 Multi-Function Armorer’s Tool allows for installation, removal, and maintenance of all your AR-15’s components. Designed to work with Torque and Tension wrenches to ensure your parts are installed to spec.

- » Heavy-duty steel construction
- » Mil-Spec barrel nut wrench
- » Free-float barrel nut wrench
- » Free-float barrel nut jam nut wrench
- » Muzzle device wrench
- » Screw driver flat head
- » Spanner wrench for old and new style castle nuts
- » Torque/Tension wrench compatible



TS-GT55 Armorer’s Multi Tool Combo Wrench

JE is providing armorers with a heavy-duty, multi-function, all-in-one combo wrench for the AR platform. Our uniquely designed tool was created with durability and functionality in mind. With all it’s essential features, this is the ultimate tool to build, maintain and customize your AR.

- » Heavy-duty steel construction
- » Mil-Spec barrel nut wrench
- » Free-float barrel nut wrench
- » Barrel nut extension wrench
- » Hammer flats
- » Muzzle brake wrench
- » 3 point castle nut wrench
- » Heavy-duty ergonomic handle
- » 1/2” & 1/4” drive, 7/16” & 1/4” hex



TS-GT6 Tactical Armorer's Wrench

A perfect all-in-one tool for your AR-15 builds, repairs, and maintenance. Install and remove free float tubes, including most barrel nuts, castle nuts, flash hiders, and muzzle brakes.

- » Heavy-duty steel construction
- » Mil-Spec barrel nut wrench
- » Free-float barrel nut wrench
- » Muzzle device wrench
- » Spanner wrench for old and new style castle nuts
- » Torque wrench compatible
- » Receiver extension removal wrench
- » Hole for hanging

AR TOOLS



TS-GT9B AR-15 Handguard Removal Tool

- » Easy installation and removal of handguards
- » Polymer with rubber-coated steel forearm
- » Easy delta ring removal
- » Non-slip rubber coating
- » Available in black, red, and tan



TS-GT24B AR-15 Handguard Removal Tool

- » Easy installation and removal of handguards
- » One-piece steel construction
- » Easy delta ring removal
- » Non-slip rubber coating



TS-GT44 4 Piece Roll Pin Punch Set

- » Anti-slip knurling
- » Heat treated steel with black finish
- » Included sizes: 1/16”, 5/64”, 3/32”, 1/8”

AR TOOLS



TS-GT2B
AR-15 Upper Vise Block

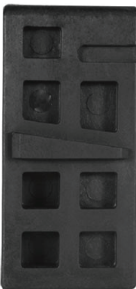
- » Safe clamping design
- » Solvent resistant
- » Compatible with AR/M4 upper receiver
- » Constructed of heavy-duty polymer
- » Not compatible with A2 or .308 receivers



TS-GT56
AR-15 A2 Front Sight Armorer's Block

- » Textured anti-slip, non-marring surface
- » Directional design for assembly and disassembly
- » Powerful magnetic plate
- » Works with the AR-15 A2 front sight post

Our JE heavy-duty vise blocks allow you to work on your AR-15 in a vise without the risk of crushing, distorting, or marring the receiver. Made of solvent-resistant polymer, our vise blocks are ideal for repair, service, or assembly.



TS-GT3B
AR-15 Lower Receiver Vise Block

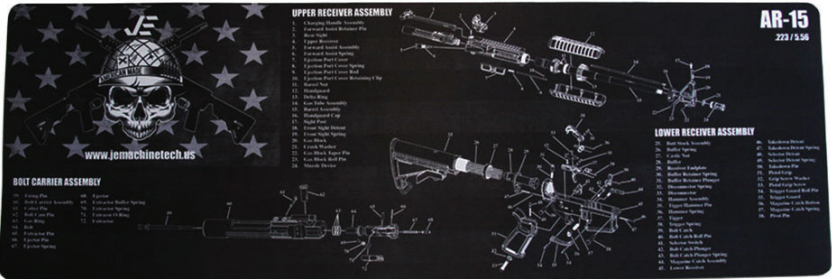
- » Works on AR-15 lower receivers
- » Vise block slides into magazine well
- » Safely and securely locks into the users vise
- » Perfect for repairs, service, or assembly



TS-GT7B
.308 Lower Receiver Vise Block

- » Allows safe vise mounting
- » For use with AR-10 style lower receivers
- » Perfect for cleaning, service, or assembly
- » Will not distort or damage the receiver
- » Made from solvent resistant polymer

CLEANING MATS



TS-GT47
Long Gun Cleaning Mat - AR-15

- » Size: 36" x 12"
- » Scratch and water-resistant surface
- » Anti-slip Neoprene rubber backing



TS-GT48
Handgun Cleaning Mat - Glock

- » Size: 18.5" x 16"
- » Scratch and water-resistant surface
- » Anti-slip Neoprene rubber backing



TS-GT49
Handgun Cleaning Mat - 1911

- » Size: 18.5" x 16"
- » Scratch and water-resistant surface
- » Anti-slip Neoprene rubber backing

ACCESSORIES FOR SHOTGUN



TS-HS2
Standard 12 Gauge Shotgun
Heat Shield

- » 13.5 Inches
- » Made from formed steel with cooling cutouts
- » Slips over the barrel and is secured with supplied hardware
- » Black Oxide finish matches most shotgun components
- » Protects your hands from burns
- » Easy to install, requires no modifications to the firearm
- » Fits 12 gauge barrels only: Norinco 98, Mossberg 500 and 590 (except 590A1), Maverick 88, Remington 870, 1100 and 11-87 (non-rib vented), Winchester 1200 and 1300
- » Weight: 7.2 oz

SKU	COLORS
TS-HS2	●



PS-PG3B
Mossberg 500 Series
Ergonomic Raptor Grip

- » Fits Mossberg 500/590/535
- » Made from high-strength industrial grade polymer
- » Includes mounting hardware
- » Made in the USA

SKU	COLORS
PS-PG3B	●
PS-PG3T	●



PS-PG9B
Mossberg 500 Series Shotgun
Pistol Grip with Buffer Tube
Attachment

- » Full size shotgun pistol grip
- » Fits Mossberg 500/590/535
- » Ergonomically designed for maximum gripping power and comfort
- » Includes hardware for easy installation
- » Storage compartment
- » Made in the USA

SKU	COLORS
PS-PG9B	●

ACCESSORIES FOR AK



PS-PG8B
AK-47 Enhanced
Operator Pistol Grip

- » 922r Compliant
- » Ergonomic design prevents wrist fatigue
- » Provides a secure grip in wet conditions
- » Improves trigger operation
- » Built-in storage
- » Designed for AK47/74
- » Operator design with textured grooves
- » Color: Black
- » Weight: 4.8 oz
- » Made in the USA

SKU	COLORS
PS-PG8B	●



PS-HGAK2B
AK-47 Handguard

- » 922r Compliant
- » Picatinny rail on both upper and lower pieces
- » Two piece design
- » Made in the USA

SKU	COLORS
PS-HGAK2B	●



TS-EPK2
AK-47 Sling Adapter

- » Made from industrial grade steel
- » Fits most AK-47/74 variants
- » Does not fit Yugos, non-converted Saigas, or thumb-hole stocks
- » Weight: 1.76 oz

SKU	COLORS
TS-EPK2	●



TS-EPK3
AK-47/SKS Ambidextrous
Sling Adapter

- » Made from industrial grade steel
- » Fits the AKM, underfolder, or Draco
- » Ambidextrous under pistol grip mount
- » Easy installation
- » Weight: 2 oz

SKU	COLORS
TS-EPK3	●

ACCESSORIES/TOOLS FOR GLOCK



TS-AR2
Smith & Wesson Sigma Series
Rail Adapter

- » Compatible with any picatinny/weaver accessory
- » Fits Smith & Wesson Sigma/9mm/.40 cal
- » Creates 1.5" rail attachment area
- » Rail Length: 1.8"
- » Made from durable lightweight polymer
- » Hardware included
- » Weight: < 1 oz



TS-GT39
Front Sight Tool For Glock

- » Compatible with all Glock front sights
- » Narrow profile
- » 3/16" hex
- » Durable and ergonomic construction

SKU	COLORS
TS-GT39B	●
TS-GT39T	●
TS-GT39R	●



TS-GT43
Disassembly Takedown
Tool For Glock

- » Easily field strip your Glock pistol
- » All-in-one takedown tool
- » Measures 3 5/8"



TS-GT8B
Table Bench Gunsmithing
Tool For Glock

- » Clean, assemble, and repair effectively
- » Solid and heavy duty
- » Fits all 9mm and .40 caliber Glock pistols

OTHER ACCESSORIES



TS-MGA2
7.62 x 54mm Stripper Clips, 5 Pack

- » Designed for 7.62 × 54mm
- » Easy reloading and storage
- » Five round capacity
- » Plated spring steel construction
- » 5 pack
- » Weight: 1.6 oz



About Us

Since our inception in 2013, JE Machine Tech has strived to provide firearm enthusiasts with high-quality and innovative products at competitive prices.

Our company consists of a team of professionals who have been in the firearms industry for over fifteen years. We are a class 07 FFL company that specializes in R&D, design, and manufacturing of aluminum and high-strength polymer firearm components.

Our mission is to consistently deliver the best quality, dependable products to the firearms industry. Our American made parts are built to the highest production standards and undergo rigorous quality control testing and inspections to ensure a lifetime of satisfaction.

Contact

For further information please contact us:

Address:
8885 White Oak Ave #103
Rancho Cucamonga CA 91730

Email:
support@jemachinetech.us

Phone:
(909)972-6545

Website:
www.jemachinetech.us

